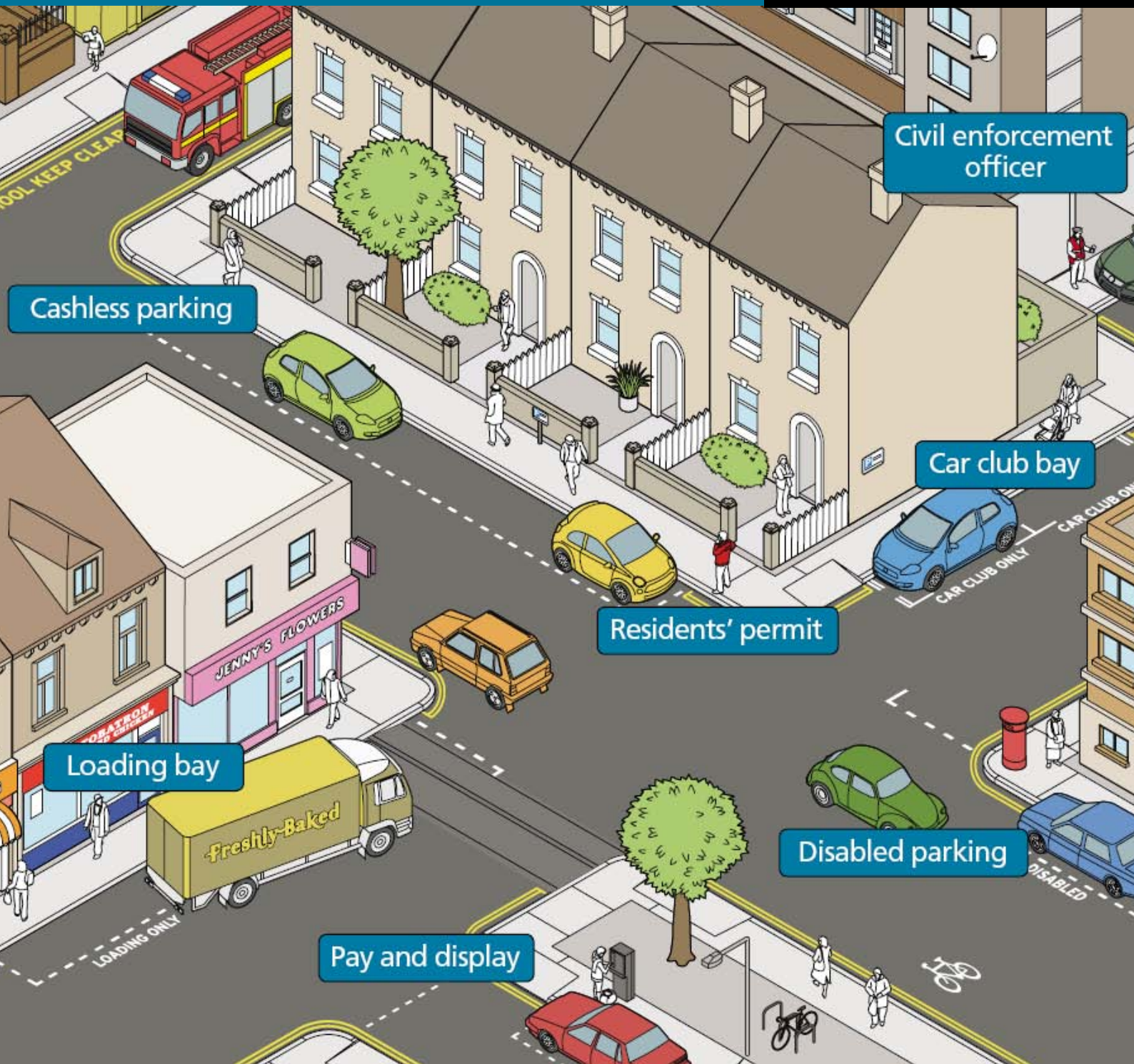


# Paterson Park, Bermondsey 1<sup>st</sup> stage CPZ study Appendices

May 2011

[www.southwark.gov.uk](http://www.southwark.gov.uk)

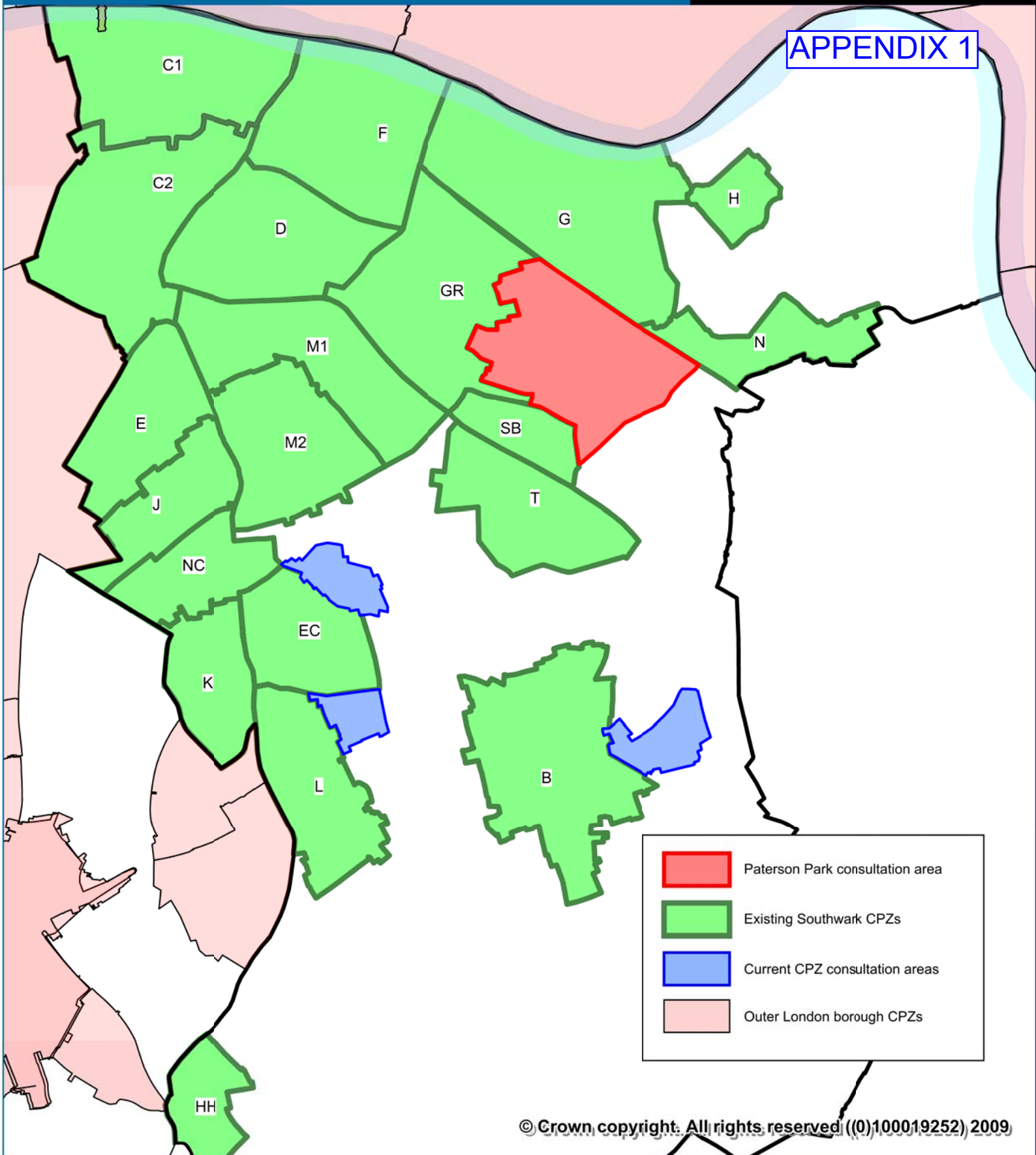


# Paterson Park Parking consultation

Network development

May 2011

APPENDIX 1



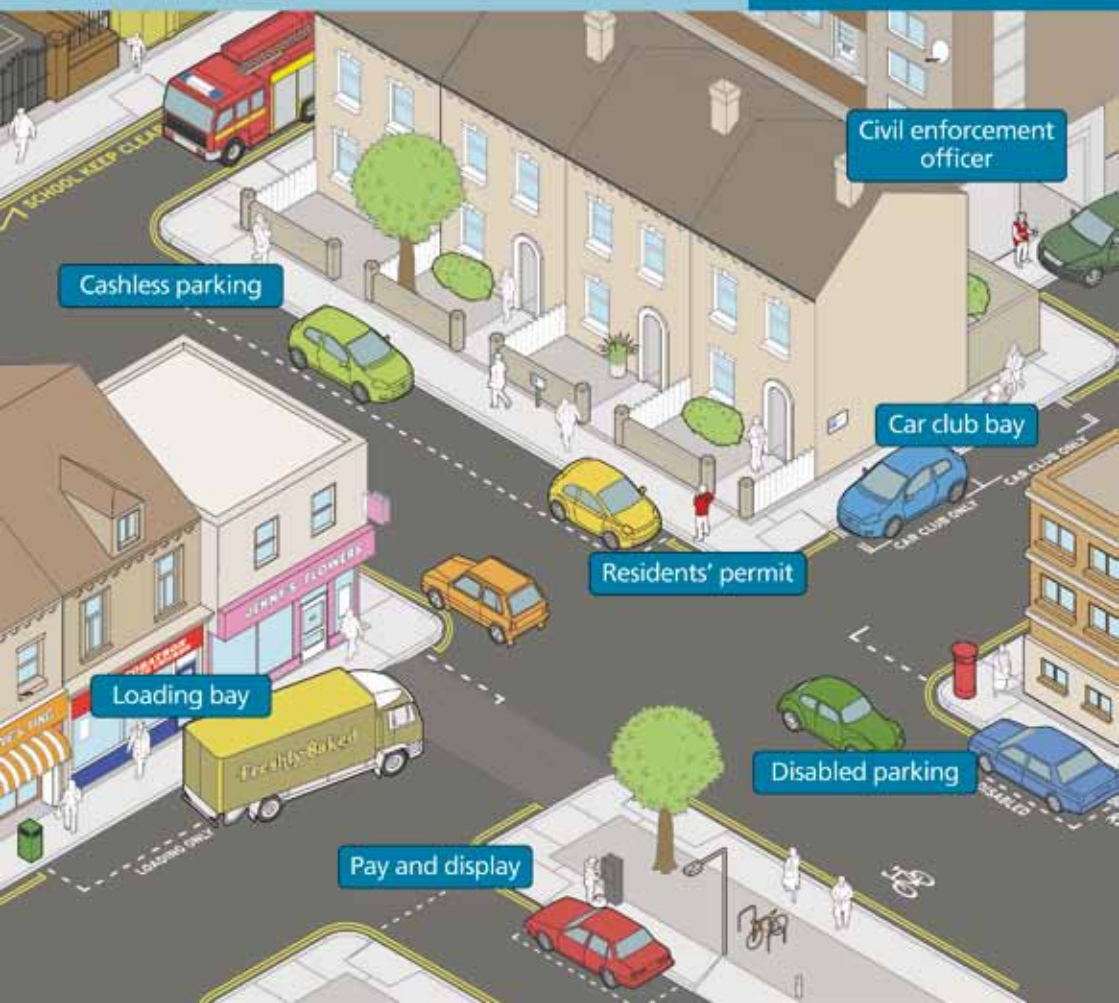


# Paterson Park, Bermondsey Parking Review

First stage consultation

March 2011

[www.southwark.gov.uk](http://www.southwark.gov.uk)



---

## Why have I received this consultation pack?

The council sets out an annual programme to look at parking issues. This included a 1st stage parking consultation in uncontrolled streets in South Bermondsey.

The consultation area is bordered by four existing Controlled Parking Zones (CPZs) and was last consulted in 2003, prior to Transport for London's introduction of congestion charging.

In recent years we have received feedback indicating that the parking problems have increased in nearby uncontrolled roads.



## **This leaflet will explain:**

- How you can have your say
- What will happen after the consultation closes
- How a CPZ operates and what you would need to do to be able to park in it

This information is intended to help you understand the proposals being made to change parking in your area and so you can make informed decisions when completing the accompanying questionnaire.

Your opinion is very important to us so please make sure you send your questionnaire back before consultation closes on 3 May 2011.

## **Your views count**

We are aware that parking difficulty may have increased in your area due to displacement from nearby G, GR, N and SB CPZs, more commuter parking as well as the recent and future redevelopment housing projects.

We are giving you the opportunity to decide if you would now like your street to become a CPZ. The inclusion of your road will be based on several factors including, support from local residents and businesses, parking survey results and the need to create a clear and logical CPZ boundary.

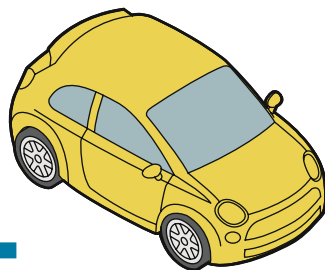
**A map showing the area being consulted is enclosed with this leaflet.**

We have sent this consultation pack to all residents and businesses in the area as everybody's opinion counts. We want to hear from you even if you do not drive; displacement parking may affect you as a pedestrian or cyclist and any visitors you receive.

---

**This is a first stage consultation where a decision is made on whether parking controls should be introduced. We would consult with you again regarding the design of parking restrictions if a decision is made to introduce a CPZ on your road.**

---



### **How can I let you know my views?**

The best way to give feedback is by completing the questionnaire online at [www.surveymonkey.com/s/ppcpz](http://www.surveymonkey.com/s/ppcpz) or by returning it to us by freepost. Please note that you should only respond via one method, duplicate responses will not be included in the final analysis. **The consultation closes on 3 May 2011**

#### **You can also:**

Phone: **020 7525 7764**

Email: [parkingreview@southwark.gov.uk](mailto:parkingreview@southwark.gov.uk)

---

## What happens after the consultation closes?

Once the consultation has closed we analyse all the responses received then present the draft findings and recommendations to Bermondsey Community Council before a final report is approved by the strategic director.

You will receive a summary letter explaining the consultation results and the decision that has been made. We will also make this information available on our website at [www.southwark.gov.uk/parking](http://www.southwark.gov.uk/parking)

If the decision is made to go ahead with introducing parking controls, we will carry out a further consultation with all residents and businesses in the roads concerned to determine the final parking layout before any works begin.



---

## What is a controlled parking zone and how does it operate?

A CPZ is an area in which all on-street parking is controlled. Parking bays are painted on the road to show where it is safe to park and all other kerb lengths are marked with yellow lines. This helps keep the street safe for both road users and pedestrians allowing priority for parking to be given to disabled people, residents and their visitors and local businesses.

During the CPZ operational hours, vehicles need to display a valid permit, visitor voucher or pay and display ticket according to the type of bay they are parked in. The council has the power to issue a penalty charge notice to people who park in CPZ bays without the appropriate permit or ticket.

You do not need to display a permit, voucher or 'pay and display' ticket outside of CPZ hours; however other restrictions such as double yellow lines (no waiting at any time) will still apply.

### **How do you balance different parking needs?**

Southwark Council has established a parking priority that is detailed in our 2006 parking and enforcement plan. It is our policy to give priority to disabled blue badge and companion badge holders, local residents and then business visitors. CPZs are designed to deter commuters and encourage public transport use.

We are also committed to supporting the economic viability of our local businesses and to encourage growth in jobs and the regeneration of town centres. As there is a limited amount of kerb space available for parking, we aim to balance the needs of residents with those of local businesses and their customers.





**A CPZ provides many benefits for the surrounding community, whether they are pedestrians, cyclists, motorists or those on buses.**

- Greater ease in finding parking spaces close to home for residents and their visitors.
- Easier parking near shops, schools and other amenities within the area with nearby pay and display bays, loading bays and disabled visitors.
- Reduced traffic congestion due to less inappropriate parking as all kerb lengths will be controlled either through designated parking bays or yellow lines. CPZs already reduce the number of vehicles driving into or through Southwark.
- A safer road environment for all motorists, cyclists and pedestrians due to less dangerous parking.
- Yellow lining at junctions will ensure better visibility and pavements will be clear of parked cars.
- Greater access for emergency vehicles, as we will be able to maintain a safe width on narrow or busy roads and powers to act on vehicles blocking access to private property.
- Improving air quality by deterring non essential car journeys and encouraging motorists to think about using a sustainable alternative to the car when walking, cycling or public transport might be quicker and more convenient.
- Assisting control on future development. Occupiers of new developments can be excluded from purchasing a permit if a CPZ surrounds the site, therefore reducing the impact on existing communities.
- Improved public realm due to the reduction of parked cars.

---

# Frequently asked questions

## What is the difference between the first and second stage consultation?

### First Stage Consultation

This initial consultation aims to establish whether or not there is support for a CPZ. We usually ask a large area so that everyone is aware of the consultation. Based upon the results, the council will decide whether a CPZ should be implemented in some, all or none of the streets. Before the CPZ is introduced a second stage consultation will be carried out.

### Second Stage Consultation

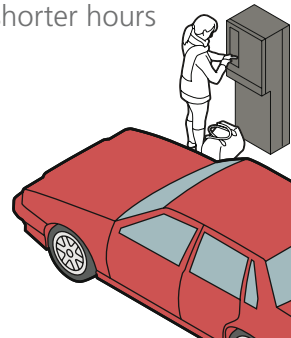
The second stage consultation aims to understand how you think the layout (type and position) of parking bays should be arranged. The results of your comments are analysed and reported before the proposals are advertised and implemented.

## Will I have to buy a parking permit if my street becomes a CPZ?

Yes, as a resident or business in the area you will need to purchase either a resident or business permit to park in the CPZ. Permits will have to be displayed at all times during the operational hours.

## When will the CPZ operate?

You will be consulted on the operational hours/days at the second stage, if a CPZ is approved for your area. However, controls are introduced that match the requirements of the area. For example town centres require longer hours of control (eg. Monday to Saturday 8.30am – 6.30pm) but areas around commuter rail stations will be successful with shorter hours (eg. Monday to Friday Noon to 2pm).



## How much will the permit cost?

Type of permit	Cost of permit				Discount
Resident	1month	3months	6months	12months	75% discount for alternative fuel vehicles or motorcycles
	£13.60	£33.45	£52.25	£99.30	
Business	1month	6months		12months	n/a
	£107.88	£206.88		£401.28	
Residents' visitors	£15 for ten, one-day permits. (1st book)				
	£35 for ten, one-day permits (2nd + book per year)				
Average pay and display charge	£2.70 per hour				

## Where will my visitors park?

Residents are eligible to purchase 'resident-visitor' permits which allow visitors to park in any vacant resident, permit or shared-use ('pay and display' and permit) bay in the CPZ. You only need to use a visitor permit during the operational hours of the zone. Each voucher allows a whole day's parking. They are available in books of 10, which cost £15 for the first booklet each year and £35 for subsequent booklets.

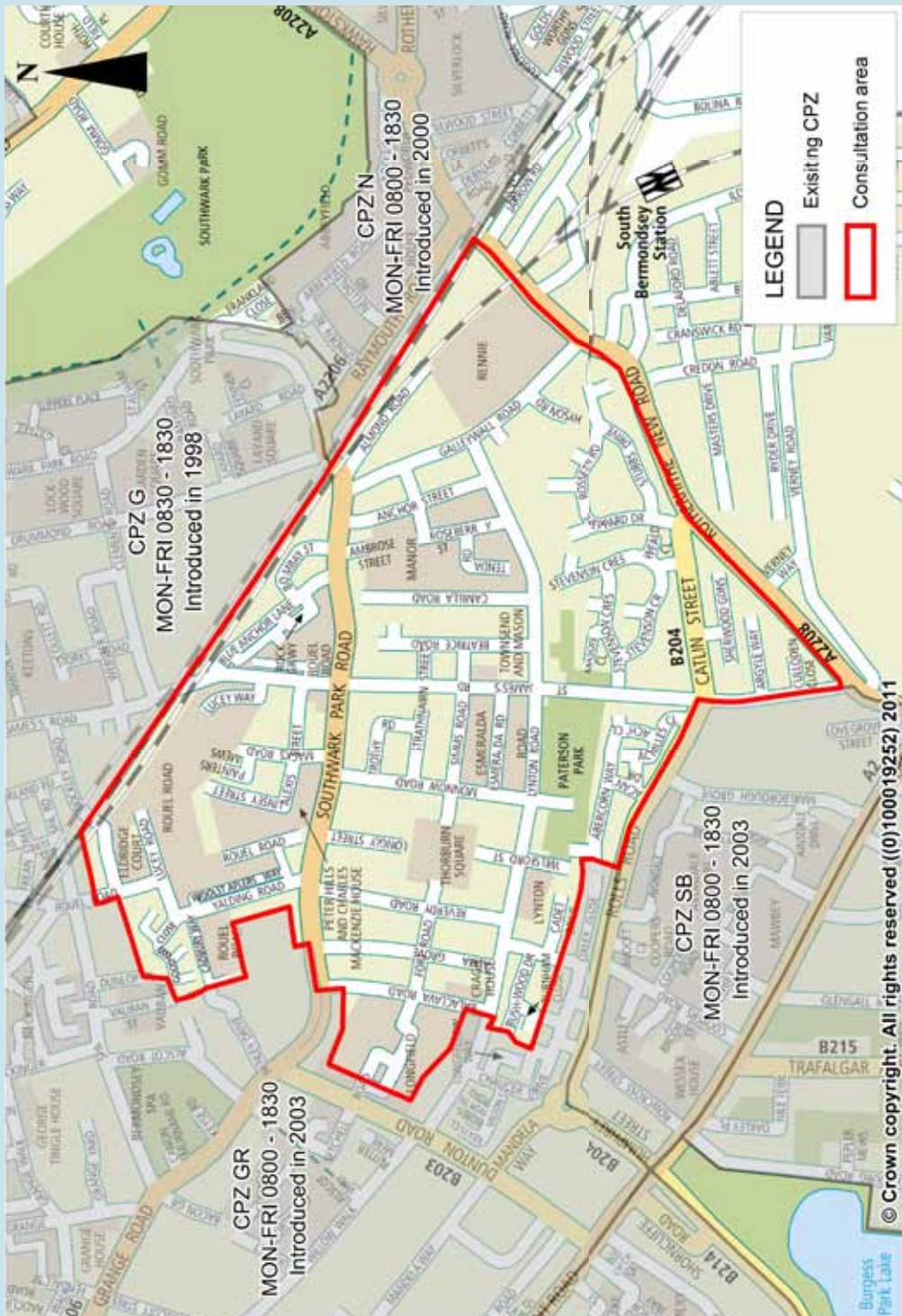
## What if I have a blue badge?

Blue badge holders can park free and without time limit in all shared-use bays ('pay and display' and permits), 'pay and display' bays, yellow lines (for a maximum of 3 hours) and dedicated blue badge bays. The council offers a disabled parking bay service to blue badge holders. This service continues irrespective of any new CPZ. If you don't have a blue badge bay you would need to purchase a residents parking permit.

## What if I live on an estate?

Many housing estates have their own parking regulations which are independent from CPZs and would not be altered as a result of this consultation. Whether or not your estate has parking controls, you would notice the effects of a CPZ in nearby streets. Your views still count in this consultation and you would be eligible to buy an on-street permit, even if your estate has its own parking scheme.





© Crown copyright. All rights reserved (0100019252) 2011

# Have your say about parking

The following questions should only take you a few minutes to complete and will ask you:

A) for a few details about you

B) about your parking experience and whether or not you support a CPZ in your street

You can complete this consultation online at [www.surveymonkey.com/s/ppcpz](http://www.surveymonkey.com/s/ppcpz)

Please refer to the background document whilst completing the questionnaire.

## Section A – About you

It's important to know some details about you so that we can carefully analyse the results. You don't need to supply your name but we do need to know your address so that your comments can be matched to your street.

1. Are you a resident or business

Resident       Business       Both

Name: optional

House / flat number: required

Street name: required

Postcode: required

## Section B – Your parking experience

2. How many vehicles do you park on the road?

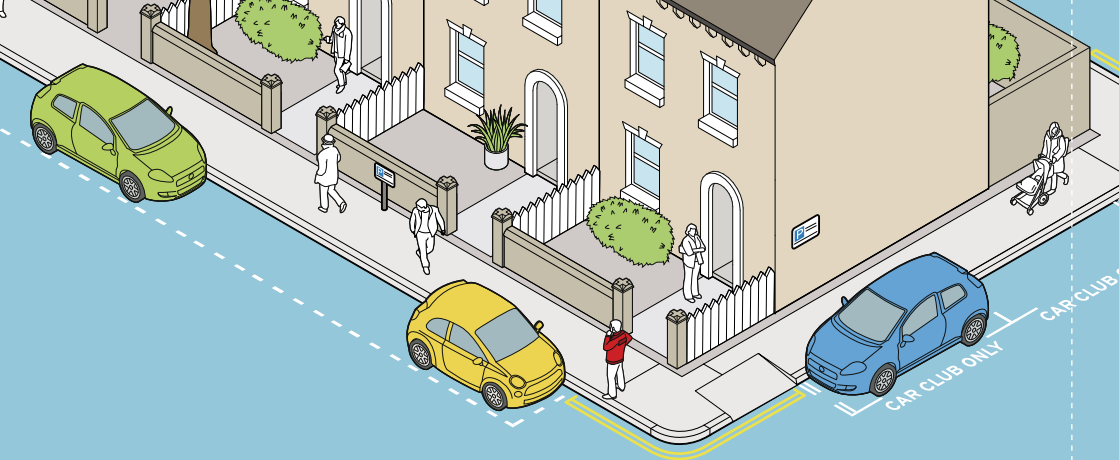
None, I park off-street       I don't have a vehicle       1       2 or more

3. Please rate the ability to find an on-street parking space near this address?

a) Yourself      Easy      1      2      3      4      5      Difficult

b) Your visitors      Easy      1      2      3      4      5      Difficult





4. What time of day do you or your visitors have difficulty parking? (Tick all that apply)

- |                   |                           |                                     |
|-------------------|---------------------------|-------------------------------------|
| Mon – Fri daytime | <input type="radio"/> You | <input type="radio"/> Your visitors |
| Mon – Fri evening | <input type="radio"/> You | <input type="radio"/> Your visitors |
| Saturday          | <input type="radio"/> You | <input type="radio"/> Your visitors |
| Sunday            | <input type="radio"/> You | <input type="radio"/> Your visitors |
| Never             | <input type="radio"/> You | <input type="radio"/> Your visitors |

5. Do you want controlled parking to be introduced in your street?

- Yes (go to Q7)       No (go to Q6)       Undecided (go to Q6)

6. If you answered “No” or “Undecided” to Q5 would you change your mind if a CPZ was introduced in an adjacent street?

This is an important question if you don’t want a CPZ at the moment but consider parking to be quite difficult – a CPZ in the road next to yours is likely to increase the demand for space in your street.

- Yes       No       Undecided

7. Please let us know any other comments you have about this proposal or the consultation?

---

---

---

This document contains information about parking services in Southwark. If you require help with translation or other formats such as audio or large print, please visit the address below.

#### Somali

Dokumintigaan waxaa ku qoran macluumaad ku saabsan adeegyada meesha baabuurta la dhigto ee Southwark. Haddii aad u baahan tahay in aad heshid iyadoo tarjuman ama iyadoo qaab kale ku habeysan sida maqal ahaan ama iyadoo nuqul ballaaran ku daabacan, fadlan booqo cinwaanka hoos ku xusan.

#### French

Ce document contient des informations au sujet des services de stationnement à Southwark. Si vous avez besoin d'une traduction ou d'un autre format tel que par audio ou en gros caractères, veuillez aller à l'adresse ci-dessous.

#### Spanish

Este documento contiene información sobre los servicios de aparcamiento en Southwark. Si usted requiere ayuda con traducción u otros formatos tales como grabación o letra grande, por favor visite la dirección abajo mencionada.

#### Turkish

Bu belge Southwark'taki park etme servisleri hakkında bilgi içerir. Eğer tercümeyle ilgili yardıma ihtiyacınız olursa veya onu sesli yada iri harfli yazılmış olarak gibi farklı biçimlerde edinmek isterseniz, lütfen aşağıdaki adresi ziyaret ediniz.

#### Arabic

تحتوي هذه الوثيقة على معلومات حول خدمات ووقف السيارات في بلدية سونرك. إذا كنت تحتاج مساعدة في الترجمة أو الصيغ الأخرى مثل طباعة الصوت أو بأحرف كبيرة ، يرجى زيارة الموقع على العنوان أدناه.

#### Chinese

此份文件包含了有關在 Southwark 停車服務的信息，如果你需要幫助翻譯，或者需要其它諸如聽力或大字體印刷品的材料，請使用以下的地址。

#### Vietnamese

Tài liệu này bao gồm thông tin về các dịch vụ đỗ xe ở Southwark. Nếu quý vị muốn nó được dịch sang ngôn ngữ của mình hay ở dưới các hình thức khác như băng nghe hoặc chữ khổ lớn, xin hãy vào địa chỉ của chúng tôi ở bên dưới.

#### Bengali

সাদাৰ্কে পাৰ্কিং সাৰ্ভিসেস্ সম্পৰ্কে তথ্যসমূহ এই দলিলটিতে দেওয়া আছে। অনুবাদ বা অন্য ফৰম্যাটে যথা অডিও বা বড় অক্ষরে এটি পাওয়ার বিষয়ে সাহায্য পেতে হলে অনুগ্রহ করে नीचे देওয়া ঠিকানায় যাবেন।

**Walworth one stop shop**  
Wansey Street, London  
SE17

**Peckham one stop shop**  
Ground floor, Peckham  
Library, 122 Peckham Hill  
Street, London SE15

**Bermondsey one stop shop** 17 Spa Road,  
Bermondsey, London SE16

# Reminder

## Consultation closes

### 3 May 2011

For more information  
[www.southwark.gov.uk/parking](http://www.southwark.gov.uk/parking)  
Tel: 020 7525 7764



# APPENDIX 3

1004\_Stakeholder\_Addresses\_1.0.xls

Type	Name	Title	Sub_Building	Building	Street_No	Street	City	PostCode	Email
Statutory	Justin Bennett	Metropolitan Police Service	South East Traffic Management Unit	South East Traffic Unit	34	Aitken Road	London	SE6 3BG	
Statutory	Station Administrator	Ambulance Operations Manager	London Ambulance Service NHS Trust	Depford Sector Administrator	1	New Cross Road	London	SE14 5DS	
Statutory	Terry Vials	London Fire Brigade	Southwark Borough Team		266b	Queens Road	London	SE14 5JN	
Statutory	The District Manager		Road Haulage Association Ltd		35	Monument Hill	Weybridge	KT13 8RN	
Statutory	The Secretary		Freight Transport Association Ltd.	Hermes House	157	St. Johns Road	Tunbridge Wells	TN4 9UZ	
Internal	Nicky Costin	Road network and parking manager	Road network and parking	Environment Department	160	Tooley Street	London	SE1 2TZ	<a href="mailto:nick.costin@southwark.gov.uk">nick.costin@southwark.gov.uk</a>
Internal	David Sole	Parking service and development manager	Road network and parking	Environment Department	160	Tooley Street	London	SE1 2TZ	<a href="mailto:david.sole@southwark.gov.uk">david.sole@southwark.gov.uk</a>
Internal	Louise Nagle	Network manager	Road network and parking	Environment Department	160	Tooley Street	London	SE1 2TZ	<a href="mailto:louise.nagle@southwark.gov.uk">louise.nagle@southwark.gov.uk</a>
Internal	Qassim Kazaz	Public Realm Programme Manager	Public realm projects	Environment Department	160	Tooley Street	London	SE1 2TZ	<a href="mailto:qassim.kazaz@southwark.gov.uk">qassim.kazaz@southwark.gov.uk</a>
Internal	Mick Lucas	Public Realm Asset Manager	Asset management	Copeland Road Depot		Blackpool Road	London		<a href="mailto:mick.lucas@southwark.gov.uk">mick.lucas@southwark.gov.uk</a>
Internal	Richard Herbert	TMO Manager	Road network and parking	Environment Department	160	Tooley Street	London	SE1 2TZ	<a href="mailto:richard.herbert@southwark.gov.uk">richard.herbert@southwark.gov.uk</a>
Internal	Barbara Selby	Head of Transport Planning	Transport planning	Regeneration and Neighbourhoods	160	Tooley Street	London	SE1 2TZ	<a href="mailto:barbara.selby@southwark.gov.uk">barbara.selby@southwark.gov.uk</a>
Internal	Sir/Madam	Waste Collection Manager	Manor Place Depot	Environment Department	30-34	Penrose Street	London	SE17 1RY	
Buses	Ralph Parker	Operations Manager	London Buses Infrastructure	Eltham Bus station		Well Hall Road	London	SE9 6SL	
Buses	Stuart Colley	Operations Director	Arriva London	Brixton Bus Garage	Streatham Hill		London	SW2 4TB	
Buses	David Cutts	Operations Director	The Go Ahead Group	London General Transport Services Limited	18	Merton High Street	London	SW19 1DN	
Buses	Paul McGowan	Managing Director	Travel London		301	Camberwell Road	London	SE5 0TF	
Buses	Mick Haynes	Area Traffic Controller - SouthEast London	LT Buses Operating Services	Sycamore House	799	London Road	Thornton Heath	CR7 6AW	
TfL	David Smith	Street Management	Transport for London	South Central Area Team	15	Dacre Street	London	SW1H 0NR	
TfL	Rachel Bain	Bus Priority & Traffic Unit	Transport for London	Windsor House	42-50	Victoria Street	London	SW1H 0NL	
Others	Graham Messenger	Confederation of Passenger Transport UK		Imperial House	15-19	Kings Way	London	WC2B 6UN	
Others	Government Office for London	Transport Branch	10th Floor	Riverwalk House	157-161	Millbank	London	SW1P 4RR	
Others	Barry Mason	Southwark Cyclists	Flat G		3	Dunnage Crescent	London	SE16 7FJ	
Others	Kristian Turner	London Cycle Network	Camden Consultancy Service	4th Floor Bedford House	125	Bedford High Street	London	NW1 7JR	
Others	Jeremy Leach	Living Streets			28	Sutherland Square	London	SE17 3EQ	
Others	Julie Timbrell	Southwark Disability Forum	c/o Community Involvement and Development Unit	East House, Southwark Town Hall		Peckham Road	London	SE5 8UB	
Others	Biddy Smith	NAVTEQ	First Floor	St. Albans House		Potrland Street	Leamington Spa	CV32 5EZ	
Others	The District Manager	The District Manager	Touring Information (RR)	RAC Motoring Services		PO BOX 700	Bristol	BS99 1RB	
Others	Ms Knight (TIP)	Automobile Association	Routes Data Research	Fanhams House			Basingstoke	RG21 4EA	
Others	Vincent Stops	Public transport user representative	London Travel Watch		6	Middle Street	London	EC1A 7JA	
Stakeholder	Cllr Barry Hargrove	Cabinet Member for Environment and Transport		Town Hall		Peckham Road	London	SE5 8UB	
	Cllr Michael Bukola	South Bermondsey Ward Councillor		Town Hall		Peckham Road	London	SE5 8UB	
	Cllr Paul Kyriacou	South Bermondsey Ward Councillor		Town Hall		Peckham Road	London	SE5 8UB	
	Cllr Graham Neale	South Bermondsey Ward Councillor		Town Hall		Peckham Road	London	SE5 8UB	
	Cllr Denise Capstick	Grange Ward Councillor		Town Hall		Peckham Road	London	SE5 8UB	
	Cllr Mark Gettleson	Grange Ward Councillor		Town Hall		Peckham Road	London	SE5 8UB	
	Cllr Linda Manchester	Grange Ward Councillor		Town Hall		Peckham Road	London	SE5 8UB	
			St Augustines Pentecostal Church			Lynton Road	Bermondsey	SE1 5DP	
			St Anne With St Augustine		10	Thorburn Square	Bermondsey	SE1 5QH	
			Bermondsey Christian Centre		45	Strathnairn Street	Bermondsey	SE1 5BN	
			Church of England Record Centre		15	Galleywall Road	Bermondsey	SE16 3PB	
			Post Office		200	Southwark Park Road	Bermondsey	SE16 3RW	
			Alma Primary School			Alexis Street	Bermondsey	SE16 3XF	
			Spa School			Monnow Road	Bermondsey	SE1 5RN	
			Cherry Garden School			Macks Road	Bermondsey	SE16 3XU	
			City of London Academy		240	Lynton Road	Bermondsey	SE16 5LA	
			South Park School			Galleywall Road	Bermondsey	SE16 3PB	

# Paterson Park, Bermondsey 1<sup>st</sup> stage parking consultation

HAVE YOUR SAY

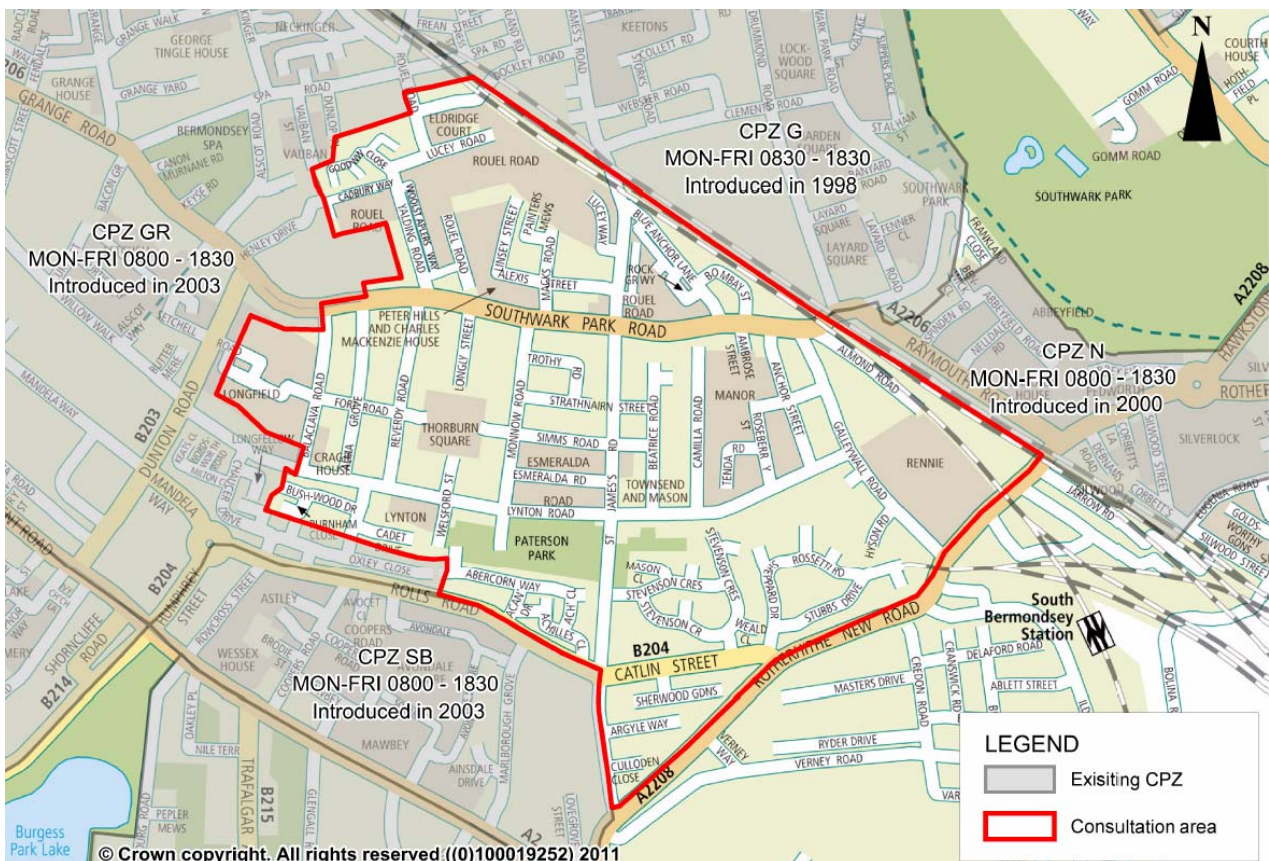
Your views will help us develop our parking plans for the future

March 2011

[www.southwark.gov.uk](http://www.southwark.gov.uk)

Southwark Council has recently sent out a consultation document to all addresses in this area to find out what you think about parking.

We need the views of all residents and businesses in the area – whether you own a car or not.



Your views are very important to us.

Please return your questionnaire no later than  
**Tuesday 3 May 2011**

You can complete the consultation online at:  
[www.surveymonkey.com/s/ppcpz](http://www.surveymonkey.com/s/ppcpz)

If you haven't received your consultation pack  
please contact us:

Email: [parkingreview@southwark.gov.uk](mailto:parkingreview@southwark.gov.uk)

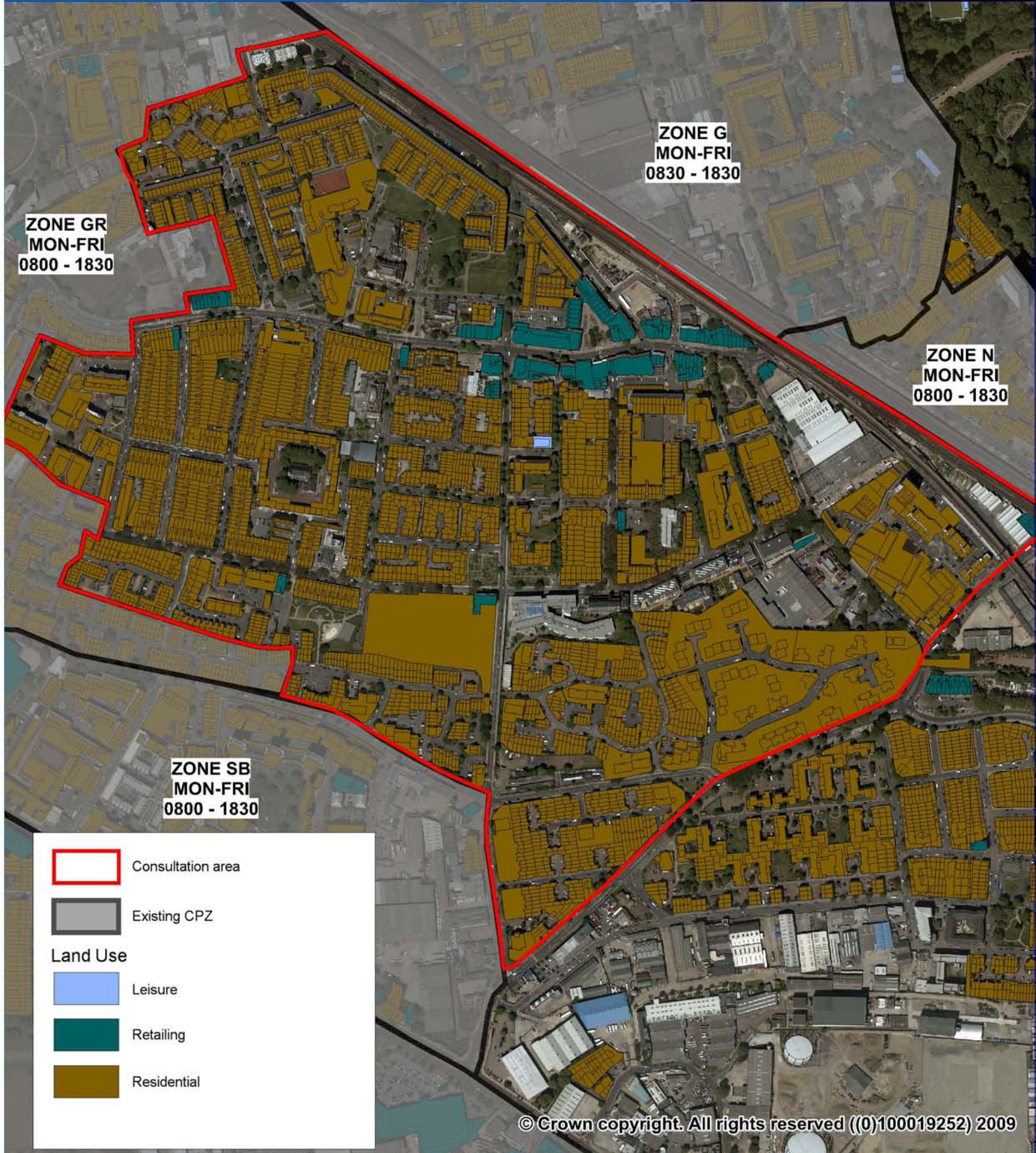
Telephone: 020 7525 7764



# Parking consultation Aerial and land use

Network development

May 2011





# Paterson Park - parking consultation

## Appendix 6

Lynton Road (Zone GR) parking amendments

May 2011

